

Prefixes – 'mid', 'pre', 'fore' and 'non'



Prefixes can tell us **useful information** about a root word.

'mid-' means 'middle'.

'pre-' and 'fore-' mean 'before'.

'non-' means 'not'.

midfield

preview

forethought

nonadjustable

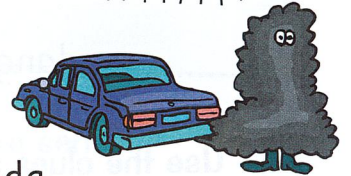
1 Circle the **prefixes** in the sentences below.

The midterm test will take place on Tuesday.

If you would like to take part, you need to preregister.

The problem with pollution is at the forefront of the agenda.

Remember — when you add a prefix, the spelling of the root word does **not** change.



2 Fill in the **gaps** in the words below using the **correct** prefixes from the box.

mid-

pre-

fore-

non-

.....mature head fiction

.....ground date way

.....summer week program

3 Complete the words in these sentences using **mid-**, **pre-**, **fore-** or **non-**.

Fortune tellers believe they cansee what will happen in the future.

To make sure we get a seat, we had betterbook our tickets.

Cara always has amorning snack at her desk at work.

Barack was disappointed that he had ordered arefillable drink.

The cricketer caught the ball inair to win the match for his team.

A pink stretch limo pulled up in thecourt of the house.